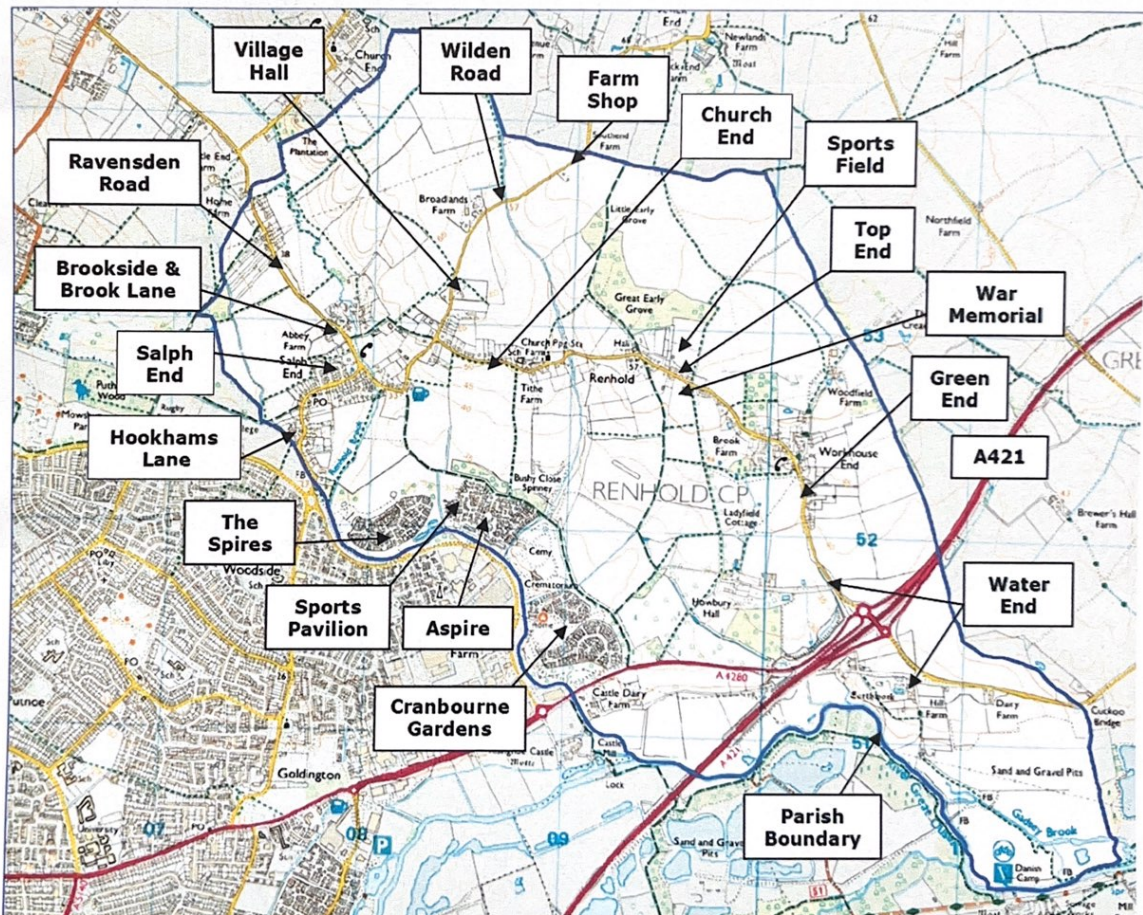


RENHOLD PARISH COUNCIL

BIENNIAL REPORT 2020 - 2022



Our Vision for Renhold

'A cohesive Parish where individuals work together for the benefit of all residents, irrespective of where in the Parish they live, their race, religion, age, gender, origin or background.'

BIENNIAL REPORT 2020-2022

FOREWORD

As I write this report, the country is slowly returning to 'normal' after months of isolation, restrictions and working from home. We have some very special individuals in our Parish who have continued to put the needs of others before their own by working on the front line and by selflessly volunteering to help those in our community who are lonely, isolated and vulnerable. You are all unsung heroes and we thank you most sincerely.

I hope that this report (our eleventh) will explain what we have been doing on your behalf over the last 24 months and will clarify how your money, in the form of the Parish Precept, has been spent.

Our Parish Council Team works tirelessly on your behalf and strives to embody the key principles of public service: selflessness, integrity, objectivity, accountability, openness, honesty and leadership. We cannot please all of the people all of the time and to our vocal critics I would say, 'Stop hiding below the parapet. Come and join us. Be the change you want to see.' For much of the last two years, we have been unable to fill the two vacancies created by the departure of Richard Cook and Darren Rayner and so have been running on 7 cylinders rather than on 9, which has been tough. To those of you who have supported us through thick and thin, particularly those of you who wrote letters to East West Rail to argue against Route E, to our foot soldiers who went from door to door to galvanise opposition against the Salph End developments, who joined us on our recent 'Save our Greenfields Protest Walk', the 'Silent Protest' at Mayor Dave's Climate Action Event in Harpur Square and our 'Conversation with Richard Fuller' to name but few, we offer you our heartfelt thanks.

As part of our commitment to community cohesion, we have worked closely with all of the Parish organisations to commemorate 'Renhold Remembers' and in the hope of forging even closer links with everyone in the Parish, we are currently planning our Platinum Jubilee Beacon Celebration at Howbury Hall on Thursday June 2nd. It is not too late to get involved, so if you would like to run a stall, sing in our Community Choir or you just want tickets to enjoy the fun, please get in touch on 07948 183164. We were sad that our VE Fayre had to be cancelled because of Covid, but we were delighted to see how many of you gathered together with your neighbours and friends to hold smaller, outdoor scale gatherings and to clap for the NHS. We hope that many of you will get together again on Sunday June 5th for the Jubilee Big Lunch.

PLEASE TALK TO US. WE ARE LISTENING.

Amanda Quince, Chair

WHAT'S IN A NAME?

The Oxford Dictionary of Place Names derives the name Renhold from two Old English elements; rana-of roe deer (genitive plural of ra) and halh-corner of land (in a hollow or river bend) implying land where deer are found. Ranhal is first mentioned in 1166 when Newnham Priory refers to ownership of a church in Ranhal. The first Vicar, Geoffrey de Ranhal was resident from 1229 until his death in 1233. All Saints Church is the oldest building remaining in the Parish today. Largely constructed between about 1290 and 1450, it has a beautifully preserved Norman font. Most of Renhold and the surrounding villages were then owned by Newnham Priory with certain families, for example the Beauchamp family of Bedford, having interests in Renhold in the early Middle Ages and on into the 1600s.

Bucking the trend, the Parish has a lively Post Office and Store, a thriving Village Primary School, a wonderful Village Hall and expansive recreational space at Fiona Way and Top End. We are also very fortunate to have a network of footpaths and bridleways, which were so vital to us all during Lockdown and precious ancient woodland at Great and Little Early Grove which support our rich biodiversity.

THE PARISH COUNCIL

Although we do not, as yet, have a full complement of Councillors, I am delighted to report that Fiona Cardinale, who lives in The Spires, has recently been co-opted to represent The Spires Ward. If you would like to join our team, please let us know.

We are truly fortunate to have retained the services of our outstanding clerk, Lizzie Barnicoat who, for fourteen years now, has been a fount of all knowledge in terms of planning, legislation, due process and protocol.

We are also superbly represented by our Borough Ward Councillors: Stephen Moon, Phillippa Martin-Moran-Bryant, Christine McHugh and Tim Caswell who update us on Borough Council news, support us by speaking up on our behalf at contentious Planning Application Meetings and Appeals, help us to answer a range of resident queries and complete time consuming Ward Fund applications for our village organisations.

HOW WE WORK

Over the past two years, the Parish Council has continued to meet in spite of Covid. Our thanks go to Ian McIver for setting up the Zoom links so that our meetings could be virtual. All of our Meetings, both virtual and face to face, are open to the public. In an attempt to boost inclusion, we have recently added the Chapter House as a venue and we hope to meet for the first time later this year at the Fiona Way Pavilion in the Aspire development. We are grateful to residents who take the time to attend meetings, being proud that public attendance is usually somewhere in the region of 8 to 16, per meeting, sometimes more. During the Open Forum, we receive questions, we are called to account and, sometimes, we are inspired - and to them we say a very big thank you.

We try to conclude our meetings by 9:30 pm, but at times the liveliness of discussion and the varied opinions expressed mean that we stay on a little longer. For those of you who have not yet attended one of our lively meetings, we extend the warmest of invitations. Our Parish Council is often cited as best practice as we are always well prepared, we have instituted standard formats for our documentation and our PC logo ensures a consistent house style. We hope you agree that this has brought a professional identity to the Parish Council.

In between our full council meetings, we represent you at an inordinate number of meetings and we do our very best to keep you abreast of developments. We meet regularly with the Highways Team in an attempt to find a mutually acceptable solution to the issues of speeding through the village and safer routes to school for the pupils and their parents. We always ensure that we have at least one representative at all meetings run by the Association for Town and Parish Councils, the Borough Council's Town and Parish Network and the Borough Council's mini planning conference. We have also sent representatives to the Bedfordshire Police Priority Setting, the Police Quarterly Review, the Police Commissioner and Parish Annual Conference and the Borough Assembly. Renhold is continually faced with expansion; from opportunistic developers and the new East-West rail link, which threaten the peace and tranquillity of our rural Parish. We are proud to have been an integral part of BFAre and we believe that we have represented you robustly in regular meetings with the Mayor, the Borough Council, the Planning Committee, our MP, the Transport Minister and EWR Co.

The three Parish Councillors, who are also on the Neighbourhood Plan Working Group: Councillors Gribble, McIver and Quince have attended the Borough's Neighbourhood Plan workshops and have visited and been inspired by the Ravensden Neighbourhood Plan presentation. By the time this report gets to you, we will have also shared our work at our own drop-in session at the Village Hall in May. As Responsible Finance Officer, Councillor McIver attended BATPC Finance training and Councillor Brunsdon attended the Refresher Course. Several Councillors also attended Bedford Borough's Local Plan workshops. Councillors McIver and Dean are Trustees for the Renhold Charity Cottages.

PLANNING

The Borough Council consults us on all planning applications made within this Parish as they pass through the various stages. Since May 2020, we have looked carefully at 118 different planning applications. We now have a small Planning Committee who make site visits for every planning application to understand the context and report back ahead of each Parish Council meeting. We also attend Borough planning meetings - even if Renhold does not have a live application at that time - to better appreciate the arguments that work and those that don't. We also attend site visits whenever the Borough's Planning Committee decide to visit our Parish, as they did with the Hookhams Lane application.

We are very fortunate to have secured the services of a local resident who is a planning expert to advise us on the most contentious planning applications. The amount of insight needed and the work involved in putting together a strong case is huge. We have been delighted with the proactive support that we have received from local residents,

both in canvassing opinion, delivering leaflets and in attending the Borough's Planning Meetings. It is vital that this energy and dynamism continue, as the 'March of Progress' is inexorable. Renhold is constantly under threat due to its proximity to Bedford, EWR, the demands of the local housing supply and the expectations of the 2040 Local Plan. Please let us know if you would like to be more involved in protecting, enhancing and influencing the future of Renhold. You would be most welcome to join the fight.

HIGHWAYS AND TRAFFIC

The ever increasing population across the Borough puts pressure on the rural road system through Renhold village to access the A421 trunk road and bypass. Increasing traffic volume and speed continue to consume much of our meeting space and our time in between meetings as we proactively engage the support of our Ward Councillors and the Borough's Highways Team. The Parish Council has an ongoing policy to mitigate the adverse effects of traffic and has purchased eight Vehicle Activated Signs for the key hot spots in Ravensden Road, Hookhams Lane, Wilden Road and Green End. We are indebted to Councillor Warwicker who downloads the invaluable data from the VAS machines for us, using a laptop bought with PC funds, and a resident who has recently developed an improved application to more accurately determine the number of speeding vehicles. This data is passed to the Police and to the Highways Authority every month. The soon to be reformed Village Speedwatch Team has negotiated a trial period with the Police to utilise the VAS to capture the data of vehicles speeding through the Village. Sadly, the Traffic Regulation Order (which was agreed as part of a package with the arrival of the A421 and the Great Barford bypass) would appear to be unenforceable as we face, on a daily basis, motorists who see Renhold as a short cut. There is a proposal to start a 'Lorrywatch' programme in the Village in order to identify HGVs which contravene the weight limit on Hookhams Lane. We regularly challenge parents who persistently park on double yellow lines and on the zigzags outside the school gates, ignoring the camera that was installed to record/monitor/deter such flouting of the rules. Residents also continue to report motorists who park selfishly and drivers who insist on parking on the verges and footpaths, thereby endangering the safety of our pedestrians. Our thanks go especially to PC Vito Napoli who, although new in post, has been very proactive in supporting us on these matters. Average Speed Cameras have made a significant difference at least to the speed if not the volume of traffic, and we have repeatedly asked for Average Speed Cameras to be installed along Ravensden Road but these are costly, in great demand and in short supply. We have been on the waiting list for a very long time. We have to hope that the data that we provide will catalyse some action.

The numbers of children at Renhold Primary have increased dramatically. Interestingly, the Education Department has ignored the fact that there are no continuous footpaths in the old village and the removal of the school bus is very much regretted. Frustratingly, the flooding issues on the walk to school from the new developments are, as yet, unresolved, in spite of our Ward Councillors' very best efforts.

Pot holes, particularly those at Pinchgut Hill and by the traffic lights, continue to plague us and the temporary repairs that have been used as a quick fix are of limited value, so

we are trying to encourage the Highways Team to expedite longer term solutions as they have done most successfully in resurfacing Hookhams Lane We ask repeatedly that the Council's budget plan can include Renhold's remaining road repairs. The Parish Council has robustly defended its dark skies policy so the village roads remain unlit, thereby retaining the rural atmosphere. As a consequence, the view to the north is a dark landscape with a star-studded sky.

ENVIRONMENT

We have regularly reviewed the grass cutting contracts and we have added in extra cuts and extra locations in an attempt to keep Renhold beautiful. We are indebted to the army of volunteers who mow the verges outside their own properties, who trim their hedges back to keep the footpaths clear, who collect litter on a regular basis and who represent us as Litter Street Champions. We are hoping to hold another Community Litter Pick in June 2022 to coincide with the Platinum Jubilee celebrations. Please join us if you can. Details from Amanda on 07948 183164.

Our Asset Inspection Rota has been a great success as there are regular monthly checks on the maintenance and safety of the assets for which we are responsible such as the War Memorial, the Parish noticeboards and the village benches. These checks serve to expedite speedier repairs and/or replacements.

The daffodils that we planted after the Queen's Jubilee are now in full bloom and we are looking to increase the number of bulbs on our verges and to plant pocket nature reserves on selected splays and roundabouts. We are also taking part in the 'Plant a Tree for Jubilee' so if you have a suitable Parish location in mind or you are just willing to lend a hand, please do let Councillor Gribble know.

FINANCE

The Parish Council is funded by the Parish Precept. It is shown on your Council Tax Bill as Renhold Parish Council. We decided to increase our residents' contribution this year by 5.1%. Although that sounds like a large percentage rise, in money terms it is an increase of just £0.87 per year for the average Band D property. This extra money will enable us to increase the number of cuts to the grass verges, to extend the number of much needed and well-deserved grants for our village organisations and to keep all of our Parish assets in good working order.

To date, we have agreed substantial grants to All Saints Church for maintenance of the Graveyard, to the Village Magazine for stapling, the Baptist Chapel for their new roof, and the Gardening Club for their meetings. If you run a village organisation and would like financial support from the Parish Council, please contact us and we will do our very best to support you.

We also have to reserve some money towards the ongoing maintenance cost of our Average Speed Cameras, and we have a pot of money set aside for new Average Speed Cameras for Ravensden Road, should they become available The budget is summarised in this report and you will see that the expenditure is generally within budget. Finance is a standing item on every Parish Council agenda and there is rigorous monitoring of

progress against budget. We are externally audited every year by Mazars and our sincere thanks go to Lizzie, Ian McIver, our Responsible Finance Officer, and our new Internal Auditor who keep us on track. Residents are warmly invited to contribute ideas as to how money could/should be spent.

OTHER VILLAGE MATTERS

Our indefatigable Clerk, Lizzie Barnicoat, regularly updates residents who have opted in to the Renhold circulation list, so please let us know if you would like to be added to this list. This is a highly cost-effective and very time-efficient way of regularly getting information to many residents Lizzie's email address is: lizzie_barnicoat@hotmail.com.

We are constantly surprised and a little disappointed that a mere 200 or so out of 1334 households in the Village opt to receive information in this way. These emails are sent out around once per month (unless something urgent comes up). We always send them as 'blind copies' (so no-one can see your email address) and we do not divulge your details to anyone. So no need to fear a sudden avalanche of adverts! Do please give this some serious consideration and sign up.

We are grateful to the Magazine Team who devote space every month for Parish Council news.

We now have even closer links with the local police as anti-social behaviour, inconsiderate parking and fly tipping are their current priorities. If you ever see one of the police 'Have your Say' surveys, it is well worth expressing your opinion as the Police determine their priorities from the resident feedback that they receive.

We held very successful virtual Parish Electors' Meeting in 2020 and 2021. The stimulating reports from the many and varied clubs and organisations within the Parish clearly demonstrated how richly talented, committed and diverse our community is.

THE PARISH COUNCIL ELECTION PROCESS

There are normally ten full Parish Council meetings a year. Meetings are held at the Village Hall, the Baptist Chapel and the Chapter House. They are held on weekday evenings, begin at 7:00pm and we try to finish at 9:30pm. Residents are encouraged to raise important issues about village life and to contribute to discussion during our Open Forum. Other standing items on the agenda include Planning, Highways, Finance, Village Matters and Borough Councillors' Reports.

As I mentioned before, we now have eight Parish Councillors whose biographies you can read in this Report. We are always on the lookout for new blood with new ideas and creative energy so, if you are genuinely interested in ensuring that Renhold's Parish Council achieves the best that it can for its residents, then please do let us know and we will contact you.

Please talk to us. We are listening.

RENHOLD PARISH COUNCIL 2020 - 2022

Clerk to the Council: Mrs Lizzie Barnicoat PO Box 1548, Bedford MK44 5AX
Tel: (01234) 771702 email: lizzie_barnicoat@hotmail.com

Councillor	Phone	e-mail
Susan Brunsdon	01234 266281	susan.brunsdon@ntlworld.com
Fiona Cardinale	07762 881009	fionacardinale@gmail.com
Margaret Dean	01234 771520	h.dean520@btinternet.com
Nicky Gribble	01234 771994	nicky.gribble@icloud.com
Ian Mclver	07968 568057	ianmciver38@gmail.com
Julian Polhill	07808 773577	julian.polhill@pagestate.com
Amanda Quince	01234 870704	pace.quince@gmail.com
Martin Warwicker	07983 156845	m.warwicker@btinternet.com
Vacancy		

HAVE YOU EVER THOUGHT ABOUT BECOMING A PARISH COUNCILLOR?

Renhold Parish Council has a vacancy for a member of the public to become a Parish Councillor. Do you have an interest in local transport, local amenities, planning and housing issues, community events, anti-social behaviour and policing and want to change things for the better, then please apply!

If you would like to get involved in making decisions about enhancing your community and its environment, influencing key decisions on local services and making a significant contribution to the Parish of Renhold, then we would love to hear from you.

You must be 18 years or over, eligible to vote and have lived or worked for 12 months or more in the Parish or within 3 miles of the Parish boundary.

YOUR COMMUNITY NEEDS YOU!

Training and advice is available for all new Councillors.

You will be joining a proactive, supportive and experienced team.

If you are interested in taking a more active role in the village, supporting with Parish improvements and have ideas on how to make Renhold a better place to live, then the Parish Council would really like to hear from you.

Contact the Clerk, Lizzie Barnicoat, by phone on 01234 771702 or by email lizzie_barnicoat@hotmail.com.

SUMMARY FINANCIAL REPORT 2020 - 2021

<u>ITEM</u>	<u>BUDGET</u>	<u>ALLOCATED</u>
Donations:		
PCC Churchyard		1600
Sports Club		
Village Magazine		1795
Contingency	4115	
British Legion	25	25
Neighbourhood Plan Steering Group	1000	480
Village Maintenance	1500	2848
Grass Cutting	5000	3300
Administration	12531	9514
Churchyard Fund	1000	1000
Neighbourhood Plan	6299	2402
Total	31470	22964

<u>ITEM</u>	<u>BUDGET</u>	<u>INCOME</u>
Precept	21884	21884
Grass Cutting Borough Contribution	1164	1164
Bank Interest	0	20
Community Infrastructure Levy	0	12777
Groundworks Neighbourhood Plan grant	0	6299
VAT Refund	0	6728
Total	23048	48872

SUMMARY FINANCIAL REPORT 2021 - 2022

<u>ITEM</u>	<u>BUDGET</u>	<u>ALLOCATED</u>
Donations:		
PCC Churchyard		1600
Sports Club		
Village Magazine		1841
Contingency	4110	
British Legion	25	115
Gardening Club		90
Renhold Chapel		11584
BFARe		1200
Village Maintenance	1145	19174*
Grass Cutting	5000	2408
Administration	13327	16287
Churchyard Fund	1000	1000
Neighbourhood Plan	7593	4600
Total	32200	59899
* includes £16,776 spent on the Vehicle Activated Signs		

<u>ITEM</u>	<u>BUDGET</u>	<u>INCOME</u>
Precept	21645	21645
Grass Cutting Borough Contribution	1164	1164
Bank Interest	0	9
Groundworks Neighbourhood Plan grant	0	7593
Beds Police Highway funding	0	10000
Bedford Borough Council Rural Grant for Renhold Chapel	0	10384
Other Income	0	53
Total	22809	50848

Councillor Profiles

Councillor Susan Brunsdon has served on the Renhold Parish Council for over ten years now.

Susan lived in Putnoe and Brickhill before moving to Cranbourne Gardens at its inception 20 years ago.

She has worked with young children all her working life including eight years in Hong Kong. Before retiring, she worked for 19 years in a Bedford pre-prep school, Polam.

Susan spent 30 years in Girl Guiding and she is currently the Vice Chair of Renhold WI. She belongs to both village book clubs and she helps to collate and deliver the village magazine. She enjoys walking - especially on the many footpaths around the village.



Councillor Fiona Cardinale has had an interest in her community for many years, both as an entrepreneur and as a mother to 5 children. She encourages her own children to be active in their community and to understand that they need to play a part in making the place they live better.

She is a very inclusive person and she feels that everyone has a right to speak and to be heard. She believes that Renhold PC should represent their views and concerns but also recognise their achievements.

As an individual she is a hands-on person, not afraid to work at corporate level, making her quite an all-rounder when it comes to a skill set. It's vital that such Parish Communities as Renhold remain in good communication with each other and with Bedford Borough Council.

She'd like to think that she would be able to assist the Parish Council in achieving their goals and support the residents. She takes a good common sense approach to problem solving and she is not afraid of hard work.



Councillor Margaret Dean is a long serving member of the Parish Council. She is particularly interested in planning and highways issues and she is Chair of Renhold's Charity Cottages.

Margaret has lived in Renhold for 60 years, buying land, designing and building a bungalow with her late husband.

She has two daughters and two grandchildren.

Margaret spent over 30 years working mainly in Civil Engineering and Public Utility Drawing offices. She is a keen gardener and she enjoys church choral singing, helping with fundraising for the Red Cross and keeping fit.

Having been a keen sportswoman, she enjoys watching any sports.



Councillor Nicky Gribble joined Renhold Parish Council in 2016.

She has lived in Church End since 1987. She was on the working group that years ago set up Renhold pre-school group, including securing the funding to build the extension to Renhold Lower School which still houses the group.

Both of her sons attended Renhold Lower School, went on to Alban Middle School in Gt. Barford and finally to Mark Rutherford Upper School. Her elder son works in Belgium and her younger son is about to complete his Master's degree from Leiden University in the Netherlands.

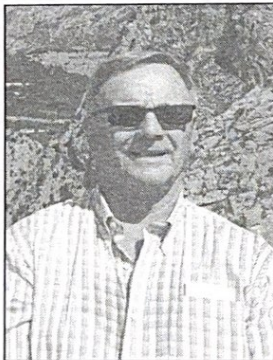
Nicky works for a large global company and specialises in and teaches Food Safety. She is a Health & Safety Officer at work.

Nicky is a country woman who is passionate to preserve our rural way of life and has an active interest in the environment and the challenges faced. Her hobbies include riding, carriage driving, tennis in all weathers and walking her three dogs.

Nicky is also a registered small-holder who has kept pigs, sheep, goats and chickens in her large garden.



Councillor Ian McIver joined Renhold Parish Council in May 2019.



Initially an electronics engineer, Ian then branched out as a freelance management consultant and worked in a wide variety of industries in many parts of the world.

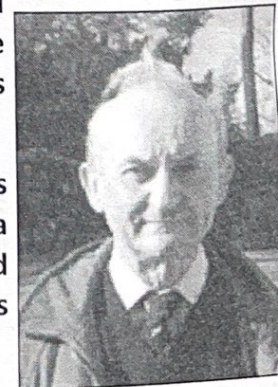
Having retired and moved to Renhold, Ian set up and maintained the renholdvillage.net website and the stop-gap Renhold Parish Council website.

As a Councillor, Ian has been instrumental in the development of the new Parish Council website, has fronted the use of the new Logo and formats for Agendas and Minutes and introduced the now-established monthly Asset Inspection rota. Additionally, Ian is very involved with the Renhold Village Magazine, is also a volunteer driver for the Sue Ryder/St John's Hospice at Moggerhanger and seems to have become Renhold's go-to tech guru!

Councillor Julian Polhill started life as a financial journalist and spent thirty years managing a financial marketing agency in the City of London. He has farmed in Renhold for twenty-five years and has known the village for over 60 years.

He is a trustee of a number of Bedford charities, chairs the Beds and Cambs Country Landowners and Business Association, is a past chair of the Beds Game and Wildlife Conservation Trust and was president of NE Beds Conservative Association for 15 years before giving up politics to become High Sheriff.

Julian likes a good fire and a whisky.



Councillor Amanda Quince joined Renhold Parish Council in 2015.



She has lived in Renhold with her husband since 1977. Both their daughters attended Renhold Lower School and during that time, Amanda was Chair of the PTA and a Parent Governor.

She is now the School, Chapel and Church link and became Chair of the Parish Council in May 2019.

Amanda attends the village reading group, coordinates the 'Renhold Remembers' event and is currently managing the Platinum Jubilee Bonfire Beacon at Howbury Hall.

Amanda spent 40 years in education, as a middle school deputy head teacher, a dyslexia tutor and a visiting university lecturer at De Montfort University.

Now retired, Amanda relishes time with her two little grandsons, plays table tennis and enjoys singing with the U3A choir.

Councillor Martin Warwicker joined Renhold Parish Council in May 2019.

Martin took early retirement in 2015 having formerly been employed in the financial services industry and latterly in warehousing and logistics where he was involved in training and Health and Safety issues.

Martin lives in Water End where he spends his time trying to whip his garden into shape and training his dog Fenrir to not destroy his horticultural achievements.

Martin moved to Renhold eight years ago and, as a Parish Councillor, he would like to help improve our village environment and make it a pleasant and safe place to live.



Lizzie Barnicoat - Clerk to the Parish Council.

Lizzie has been our amazing Clerk and has kept us on the straight and narrow for twelve years.

She is extremely knowledgeable and experienced in Clerking and has built up a wide circle of contacts who can offer support and advice as and when necessary.

Many thanks Lizzie!

NEW RENHOLD PARISH COUNCIL WEBSITE

Over the last two years, we commissioned the new Renhold Parish Council website – Renhold-pc.gov.uk. The building of this website is contracted out to a local specialist who is able to produce a much more professional-looking and flexible result.

Work is still ongoing with transferring all the historical Parish Council data to this new facility. This new website has the capability to bring together material from the Parish Council, the Neighbourhood Plan initiative and the Magazine back-issue catalogue. The older website (Renhold-pc.co.uk) will remain in existence until all the information is safely copied across to the new site.

We also started a new 'Renhold Parish Council' Facebook presence and this too is gradually being brought into service.

A final feature of the new website will be the ability to provide Parish Councillors with 'Parish Council' email addresses, removing the need for your volunteer Parish Councillors to use their private ones. The new style will be publicised in due course.

We hope everyone will make use of these new online opportunities to keep in touch, but we will continue to feed as much data to the Magazine as it can accommodate.

RENHOLD Neighbourhood Plan: an Update

What is a Neighbourhood Plan?

A Neighbourhood Plan is a document produced for, in and by Renhold which sets out our preferred Planning Policies for our Village.

Following acceptance by a majority in a Parish Referendum, our Neighbourhood Plan will become a 'material issue' which the Borough Council must take into account when deciding whether or not to approve planning applications in the Village.

Who is on the Neighbourhood Plan Working Group?

A group of eight residents and three Parish Councillors

What have we achieved so far?

Our surveys are bringing the community together.

We are listening to your opinions and we are acting upon them.

We are creating a robust plan with a shared vision and objectives.

Your responses are reflecting the needs and aspirations of our residents.

Your responses are helping us to ensure that the recreational and social needs of local people are considered.

Your responses have helped us to identify important local green spaces, views and gaps.

We have stressed the importance of the most sensitive areas in the Parish that must be protected from development.

Our Housing Needs Analysis can help to influence the size and style of and new houses and what they look like.

Our policies will help to maintain the rural character of the Parish.

Our work is giving us a positive rather than a reactive voice.

Once completed, our Neighbourhood Plan can help to protect against inappropriate development in the Village, it can help to determine which sites are developed and it will give us more control over what happens in Renhold.

Want to find out more?

If YOU would like to become involved and help make a difference to the life, amenity and environment of TOMORROW'S Renhold residents, contact Amanda on 07948 183164 TODAY!

We would be delighted to have you on board, as there is lots still to do . . .

OK, so what needs doing?

There are a number of different types of tasks to be undertaken, including compiling plans, typing up documents, marking up maps, popping leaflets through letterboxes, analysing returned questionnaires, attending meetings, etc.

And on a personal note:

I am proud of our achievements and I would like to thank my brilliant Parish Council and Neighbourhood Plan Teams for their vital contribution in challenging times.

I would also like to assure all residents that although we are all part-timers and unpaid amateurs, we do try to do our very best for the Parish and all its residents. We work even-handedly within the legal constraints imposed upon us. We will all continue to do all we can to make Renhold a safer, more cohesive and more vibrant place to live.

Amanda

RENHOLD NEEDS YOU AND YOU NEED RENHOLD

'A cohesive Parish where individuals work together for the benefit of all residents, irrespective of where in the Parish they live, their race, religion, age, gender, origin or background.'

Our Vision for Renhold



This Report printed by JCB Printers
t: 01234 871861 e: info@jcbprinting.co.uk